

Cub 2s

2 000 lb Powersport Winch



PN 122012 12V

Features Include

- Sealed highly efficient low amp draw permanent magnet motor.
- Lightweight and compact design.
- Centre drum winch provides better support, handles side loading, increases strength and performance.
- Mechanical, dynamic brakes for 100% loadholding.
- Cam activated free spool clutch for rapid wire rope payout.
- Dyneema SK-75 12-strand construction synthetic rope, coated to improve abrasion resistance and protect from the ingress of dirt and grit.
- Submersible, sealed contactor handles high amps and allows higher duty cycle.

Specifications

- | | |
|-----------------------------|---|
| • Rated line pull: | 907 kg (2 000 lb) single line. |
| • Line speed (1st layer): | 6.1 mpm 20amps at no load.
2.0 mpm 150amps at full load. |
| • Motor: | 600 w / 0.8 hp 12V permanent magnet. |
| • Gear ratio: | 3-stage planetary 103:1 |
| • Clutch (free-spooling): | Cam activated. |
| • Brake (outside the drum): | Mechanical spring applied dynamic brakes. |
| • Winch construction: | Aluminum die-cast drum and steel plate housings. |
| • Drum size: | 38 x 82 x 75 L |
| • Control: | Handlebar rocker switch. |
| • Rope: | Synthetic SK-75 |
| • Size: | 4 mm x 15.2 m |
| • Mounting bolts pattern: | 124 mm x 76 mm |
| • Std Compliance: | CE Machinery Directive 2006/42/EC
CE EMC Directive 2004/108/EC |

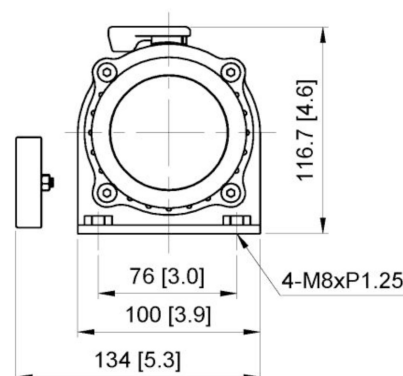
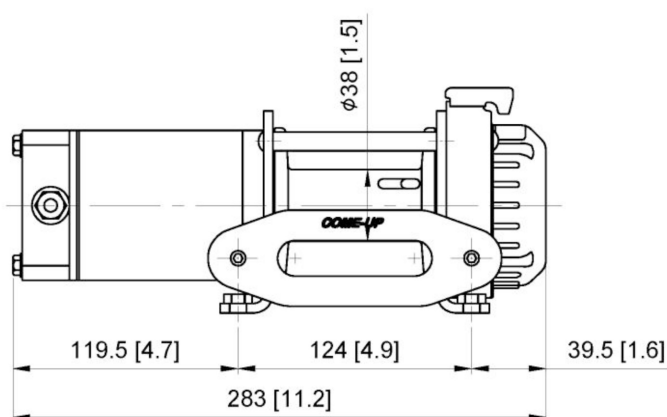
Line Pull and Rope Capacity

ROPE LAYER	PULL BY LAYER (KG / LB)	LINE SPEED (MPM)	TOTAL ROPE ON DRUM (M)
1	907 / 2000	2.0	2.4
2	762 / 1 680	2.4	5.3
3	657 / 1 448	2.8	8.6
4	577 / 1 272	3.2	12.4
5	515 / 1 135	3.6	15.2

LINE SPEED & AMP DRAW (1st Layer of Synthetic Rope on the Drum)

LINE PULL	LINE SPEED	AMP DRAW
KG / LB	MPM	12V
No Load	6.1	20
302 / 666	4.6	50
605 / 1 334	3.1	100
907 / 2 000	2.0	150

Dimensions mm/inch



Packaging

- Winch Weight: 5.2 kg
- Gross Weight: 10 kg
- Box Dimensions: 296 x 223 x 140 mm

Accessories

- Synthetic rope 4 mm x 15.2 m w/safety hook
- Handlebar rocker switch kit
- Hawse fairlead
- Mounting hardware
- Handlebar hardware
- Contactor pack

WARNING!

- Do not use winch to transport, lift or otherwise move personnel.
- The rated line pull shown is based on the first layer of wire rope on the drum.
- The wire rope must remain on the drum at all time with at least 10 wraps.

Warranty

Limited lifetime warranty for mechanical components and 1-year warranty for electrical components from date of purchase. Wire/Synthetic ropes are not included under warranty.