

Cap 9s

9 000 lb Self-Recovery Winch



PN 859312

Features Include

- Low-profile and compact with a narrow drum.
- Lightweight with Dyneema SK-75 synthetic rope.
- 9 000 lb of pulling power and fast line retrieval.
- 3 400 w / 4.6 hp 12V series wound motor delivers superior torque output.
- Silicone sealed at all motor and gear housing joints reduces water and dust ingress.
- Submersible single double acting sealed contactor.
- Stainless steel free spool clutch T-handle can be rotated to suit various mounting arrangements.
- Genuine 12-strand Dyneema SK-75 synthetic rope, coated to improve abrasion resistance and provide protection from dirt and grit ingress.
- Water-proof remote control with thermometric LED indicator alerts when motor overheating.
- Mechanical cone brake is positioned away from the drum and holds the full load without slipping.

Specifications

- Rated line pull: 4 082 kg (9 000 lb) single line.
- Line speed (1st layer): 13.7 mpm 55A 12V , no load.
2.1 mpm 350A 12V, full load.
- Motor: 3 430 w / 4.6 hp 12V series wound
- Gear ratio: 3-stage planetary 156:1
- Clutch (free-spooling): Lift and turn SS T Bar handle.
- Brake (outside the drum): Automatic cone brake holds full load.
- Winch construction: Aluminum die-cast housings with steel drum.
- Drum size: 63.5 x 151.5 x 125 mm
- Control: Waterproof remote with thermometric indicator LED, 5 m cord.
- Recommended rope: Synthetic Dyneema SK-75.
- Size: 10 mm x 15.2 m
- Mounting bolts pattern: 152 mm x 114 mm

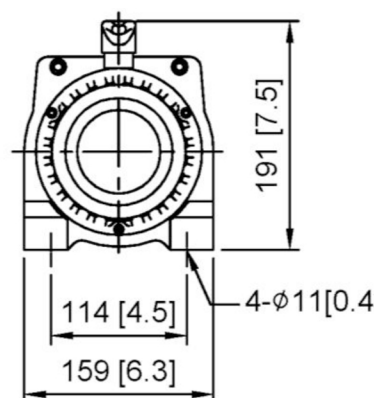
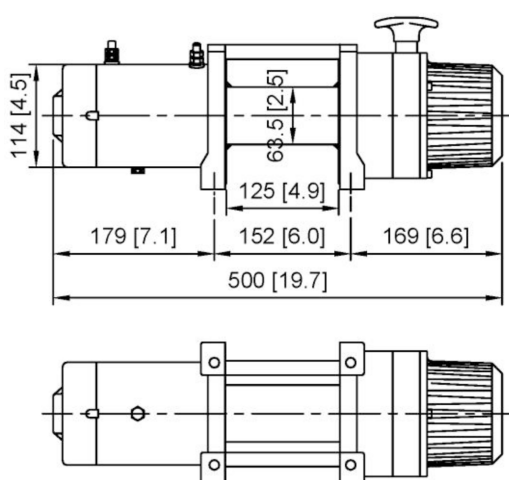
Line Pull and Rope Capacity

ROPE LAYER	PULL BY LAYER (KG / LB)	TOTAL ROPE ON DRUM (M)
1	4 082 / 9,000	2.9
2	3 270 / 7 209	6.6
3	2 728 / 6 014	11.0
4	2 340 / 5 158	15.2

LINE SPEED & AMP DRAW (1st Layer of Synthetic Rope on the Drum)

LINE PULL	LINE SPEED	AMP DRAW
KG / LB	MPM	12V
No Load	13.7	55
907 / 2 000	4.7	10
1 814 / 4 000	3.5	200
2 722 / 6 000	2.7	230
3 629 / 8 000	2.4	260
4 082 / 9 000	2.1	350

Dimensions mm/inch



Packaging

- Winch Weight: 24.5 kg
- Gross Weight: 34.3 kg
- Box Dimensions: 550 x 195 x 425 mm

Accessories

- Synthetic rope 10 mm x 15.2 m w/clevis hook
- Remote control 5m cord
- Polished Alloy Hawse fairlead
- Detachable control box
- 1.8 m 2/0 gauge battery lead
- Handsaver strap
- Winch Accessory Kit (OPTIONAL)

WARNING!

- Do not use winch to transport, lift or otherwise move personnel.
- The rated line pull shown is based on the first layer of wire rope on the drum.
- The wire rope must remain on the drum at all time with at least 10 wraps.

Warranty

Limited lifetime warranty for mechanical components and one(1) year warranty for electrical components from date of purchase. Wire/Synthetic ropes are not included under warranty.