

Blazer

8000 lb Competition Winch



PN 855800 12V

Features Include

- Twin 7.0 hp series wound motors with thermal protection.
- 3-stage spur gear train and upright housing.
- No Load retrieval speed of 50m/m.
- Ratchet brake outside the drum expedites heat dispersion and also makes the winch ideal for use with synthetic rope.
- Pneumatic freespool clutch for rapid, effortless rope payout.
- Twin submersible sealed contactors spread the current, reducing heat.
- 63.5 mm diameter x 290 mm long drum is suitable for synthetic rope 11 mm x 46 m
- Water-proof remote control with thermometric LED indicator alerts when the motor overheats.
- Engraved alloy hawse fairlead supplied for recommended synthetic rope.

Specifications

- | | |
|-----------------------------|--|
| • Rated line pull: | 3 630 kg (8 000 lb) single line |
| • Line speed (1st layer): | 50 m/m 12 V 96 amps at no load |
| • Motor: | 5 250 w / 7.0 hp 12 V series wound x 2 pcs |
| • Gear ratio: | 3-stage spur gear train 33.5:1 |
| • Clutch (free-spooling): | Pneumatic |
| • Brake (outside the drum): | Ratchet brake, full load holding |
| • Winch construction: | Aluminum die cast housings with steel drum |
| • Drum size: | 63.5 x 197 x 290 mm |
| • Control: | Waterproof 5 m remote with thermometric indicator LED. |
| • Recommended rope: | Synthetic Dyneema |
| • Size: | 11 mm x 46 m |
| • Mounting bolts pattern: | 330 mm x 114.3 mm |

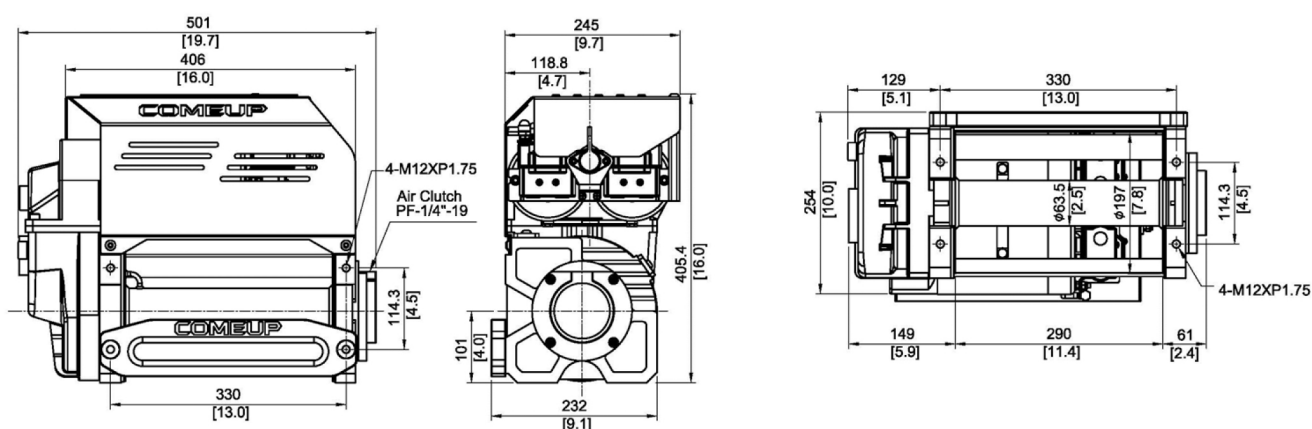
Line Pull and Rope Capacity

LINE SPEED & AMP DRAW (1st Layer of Synthetic Rope on the Drum)

ROPE LAYER	PULL BY LAYER (KG / LB)	TOTAL ROPE ON DRUM (M)
1	3 630 / 8 000	5.7
2	2 802 / 6 177	13.2
3	2 282 / 5 031	22.3
4	1 925 / 4 244	33.2
5	1 664 / 3 669	46.0

LINE PULL	LINE SPEED	AMP DRAW
KG / LB	MPM	12V
No Load	50.0	96
910 / 2 000	13.9	395
1 810 / 4 000	7.0	572
2 720 / 6 000	2.0	728
3 630 / 8 000	0.7	939

Dimensions mm/inch



Packaging

- Winch Weight: 58 kg
- Gross Weight: 78 kg
- Box Dimensions: 640 x 390 x 590 mm

Accessories

- Remote control 5m cord
- Air free-spool clutch fitting
- Hawse fairlead
- 1.8 m 2/0 gauge battery lead
- Synthetic rope 11 mm x 46 m (OPTIONAL)
- Sling Hook (OPTIONAL)

WARNING!

- Do not use winch to transport, lift or otherwise move personnel.
- The rated line pull shown is based on the first layer of wire rope on the drum.
- The wire rope must remain on the drum at all time with at least 10 wraps.

Warranty

Limited lifetime warranty for mechanical components and one(1) year warranty for electrical components from date of purchase. Synthetic ropes are not included under warranty.